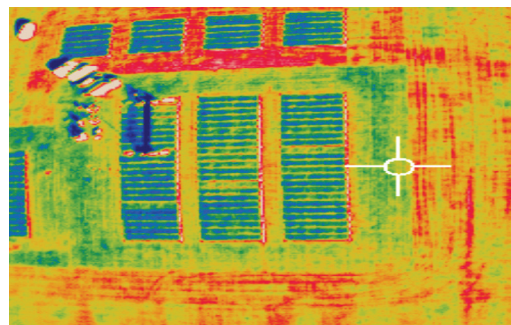


SMART INSPECTORS is an expert network dedicated to airborne remote sensing on demand with drones and microlight aircraft in research and development. The network is counseling small and medium enterprises and other organisations in developing and testing future commercial applications. The design of novel hyperspectral imaging systems and radars, fully customized flying sensor platforms, remote data transmission solutions, as well as optimized analysis procedures based on emerging technologies is our core business. Our groundbreaking compact multi-sensor fusion systems are designed to be carried by small remote piloted aircraft systems. These integrated high-tech solutions find their way into professional applications, such as precision agriculture, environmental monitoring and industrial surveillance.

References

- Rheinische Friedrich-Wilhelms Universität Bonn
INRES-Gartenbauwissenschaft
- PV Anspurger mbH
- Netteverband
- WUR UAV Research Facility
- Pfeifer & Langen GmbH & Co. KG
- GeSa mbH
- Designcrafts GmbH
- Römer Airservice
- Forschungszentrum Jülich



Unterstützt durch / Mede mogelijk gemaakt door:

Ministerium für Wirtschaft, Energie,
Bauen, Wohnen und Verkehr
des Landes Nordrhein-Westfalen



Ministerie van Economische Zaken,
Landbouw en Innovatie



provincie
Gelderland



INTERREG - Grenzregionen gestalten Europa
Europäischer Fonds für Regionale Entwicklung der Europäischen Union
INTERREG - Grensregio's bouwen aan Europa
Europees Fonds voor Regionale Ontwikkeling van de Europese Unie

INTERREG
Deutschland
Niederland



www.deutschland-nederland.eu

Leadpartner:

Hochschule Rhein-Waal
Friedrich-Heinrich-Allee 25
47475 Kamp-Lintfort

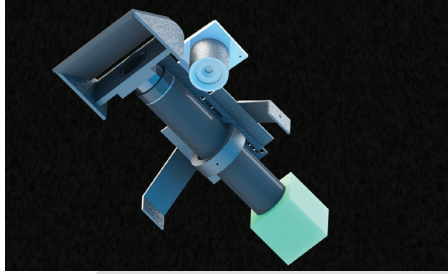
Prof. Dr.-Ing. Rolf Becker

Mail: info@smartinspectors.eu
www.smartinspectors.eu

SMART INSPECTORS

Experts in Remote Sensing

SMART INSPECTORS is a competence network for remote sensing in business applications.
Expertise:



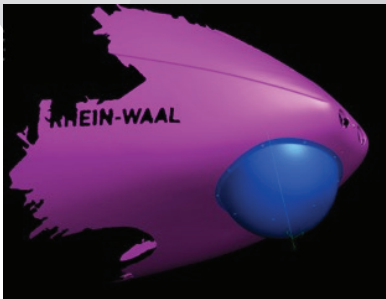
Sensor Design and Fusion
e.g. Hyperspectral Camera



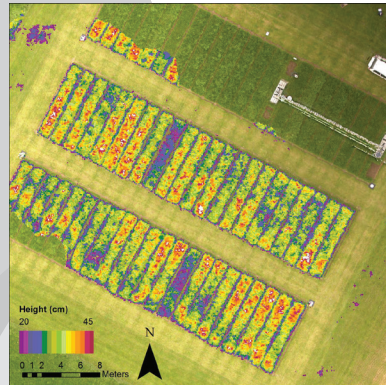
Consulting
e.g. Wildlife Detection



Services
e.g. Structure from motion for surveillance with PV Anspurger



Engineering
e.g. fuselage customizing with Designcrafts GmbH, Römer Airservice



Customer Tailored Solutions
e.g. precision agriculture



Consortium



Technology
Sustainable Agriculture



Remote Sensing
Precision Farming



Radar
RF-Technology



Agricultural Research
Consulting



Agricultural Practice
Consulting



Agricultural Analysis
Consulting



Sensor Networks
Electronics